



ESTD. 1944

# Vaish College, Bhiwani

(Affiliated to Chaudhary Bansi Lal University, Bhiwani-Haryana)



**Assessment Period: 2018-2023**

## Supporting Document: 4.1.1

The Institution has adequate infrastructure and physical facilities for

\*teaching-learning viz. classrooms, laboratories, computing equipment etc.

\*ICT-enabled facilities such as smart class ,LMS etc.

Facilities for Cultural and Sports activities, Yoga Centre, Games(Indoor and Outdoor, Gymnasium) etc.

### Metric 4.1.1

The Institution has adequate infrastructure and physical facilities for teaching-learning viz.,classroom,laboratories,computing equipment etc.

S.NO	Particulars
1	Saraswati Temple
2	College Main Gate
3	Statue of Founder of Shri Seth Kirorimal ji
4	Principal Office
5	College Auditorium
6	Confernce Room
7	Seminar Hall
8	Arts & Commerece Block
9	Science Block
10	College Library (Main)
11	Library (Self Finance Department)
12	Department of Mathematics
13	Department of English
14	Department of Economics
	Department of Histroy
15	Department of Political Science
16	Department of Commerece
17	Department of Hindi
18	Department of Sanskrit
19	College Entrance Campus
20	College Administration Block
21	Diamond Block
22	Girls Common Room
23	Staff Room
24	Superintendent Room
25	Clerk office (With seprate Room)
26	Smart Class Room 1
27	Smart Class Room 2
28	Smart Class Room 3
29	Computer Lab I
30	Computer Lab II
31	Computer Lab III
32	Computer Lab IV (BBA department)
33	Computer Lab V (BCA Department)
34	Department of Chemistry
35	Chemistry Lab I
36	Chemistry Lab II
37	Chemistry Lab III (Physical Lab)

<b>38</b>	<b>Department of Physics</b>
<b>39</b>	<b>Physics Lab I</b>
<b>40</b>	<b>Physics Lab II</b>
<b>41</b>	<b>Physics Lab III (Computer Lab)</b>
<b>42</b>	<b>Department of Botany</b>
<b>43</b>	<b>Botany Lab</b>
<b>44</b>	<b>Department of Zoology</b>
<b>45</b>	<b>Zoology Lab</b>
<b>46</b>	<b>Department of Psychology</b>
<b>47</b>	<b>Psychology Lab</b>
<b>48</b>	<b>CCTV Camera</b>
<b>49</b>	<b>IQAC/NAAC Room</b>
<b>50</b>	<b>Health Center</b>
<b>51</b>	<b>Dean Student Welfare and BURSAR office</b>
<b>52</b>	<b>UGC office</b>
<b>53</b>	<b>College Canteen</b>
<b>54</b>	<b>Ramp For Disabled Persons</b>
<b>55</b>	<b>Bus Pass And Fees Counter</b>
<b>56</b>	<b>Parking Place I</b>
<b>57</b>	<b>Parking Place II</b>
<b>58</b>	<b>Parking Place III</b>
<b>59</b>	<b>Water And Electric Store</b>
<b>60</b>	<b>Solar Pannel</b>
<b>61</b>	<b>Generator I and II</b>
<b>62</b>	<b>Suggestion Box and Notice Board</b>
<b>63</b>	<b>Fire Safty</b>

  
 Principal  
 Principal,  
 VAISH COLLEGE  
 BHIWANI

# VAISH COLLEGE, BHIWANI

## 4.1. PHYSICAL FACILITIES



## SARASWATI TAMPLE



## COLLEGE MAIN GATE

# VAISH COLLEGE, BHIWANI



STATUE OF THE FOUNDER OF SH.SETH KIRORIMAL JI



PRINCIPAL OFFICE

# VAISH COLLEGE, BHIWANI



Bhiwani, Haryana, India  
11, Krishna Colony, Bhiwani, Haryana 127021, India  
Lat 28.799123°  
Long 76.128454°  
22/09/23 11:37 AM GMT +05:30

COLLEGE AUDITORIUM INSIDE & OUTSIDE VIEW

Principal  
Principal,  
VAISH COLLEGE  
BHIWANI

# VAISH COLLEGE, BHIWANI



CONFERENCE ROOM



SEMINAR HALL

# VAISH COLLEGE, BHIWANI



**DEPARTMENT OF ARTS AND COMMERCE BLOCK**



**SCIENCE BLOCK**



# VAISH COLLEGE, BHIWANI



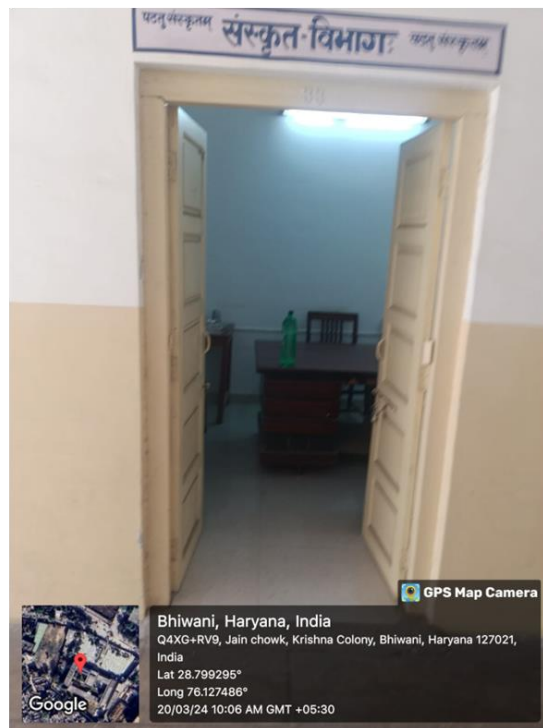
  
Principal,  
VAISH COLLEGE  
BHIWANI

# VAISH COLLEGE, BHIWANI



Principal  
Principal,  
VAISH COLLEGE  
BHIWANI

# VAISH COLLEGE BHIWANI



Principal,  
VAISH COLLEGE  
BHIWANI

# VAISH COLLEGE, BHIWANI

## College Library (Main)



GPS Map Camera  
Bhiwani, Haryana, India  
11, Krishna Colony, Bhiwani, Haryana 127021, India  
Lat 28.799123°  
Long 76.128454°  
14/09/23 10:35 AM GMT +05:30



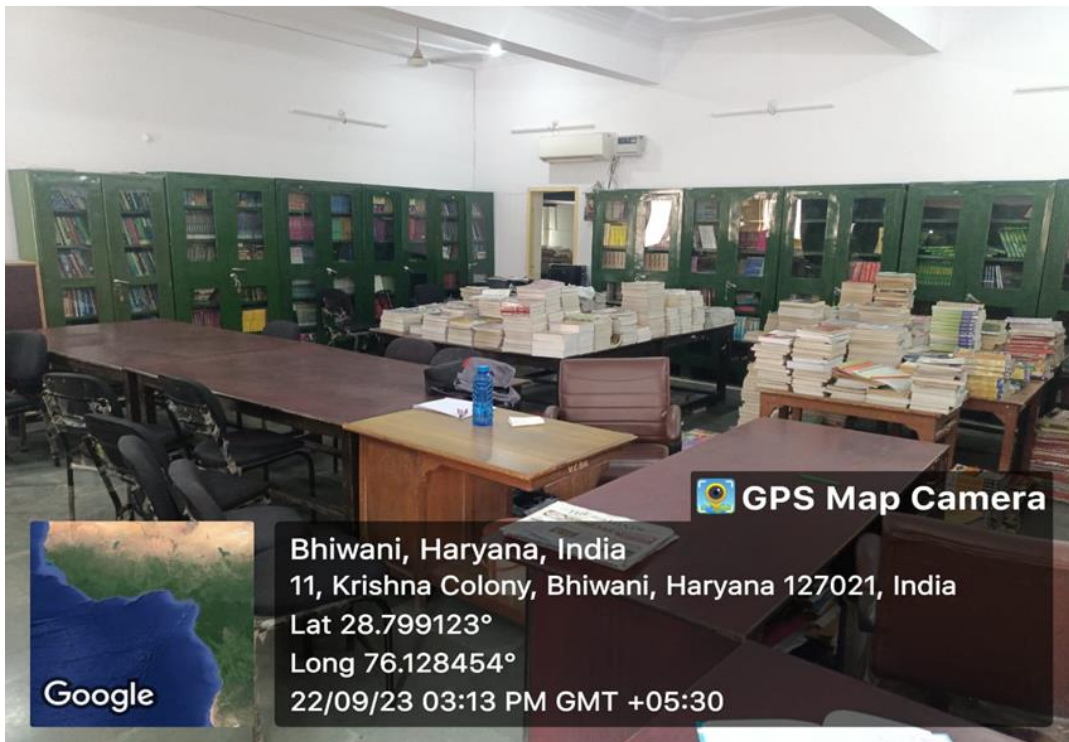
GPS Map Camera  
Bhiwani, Haryana, India  
11, Krishna Colony, Bhiwani, Haryana 127021, India  
Lat 28.799123°  
Long 76.128454°  
22/09/23 02:31 PM GMT +05:30



Principal  
Principal,  
VAISH COLLEGE  
BHIWANI

# VAISH COLLEGE BHIWANI

## COLLEGE LIBRARY (SELF FINANCE)



GPS Map Camera

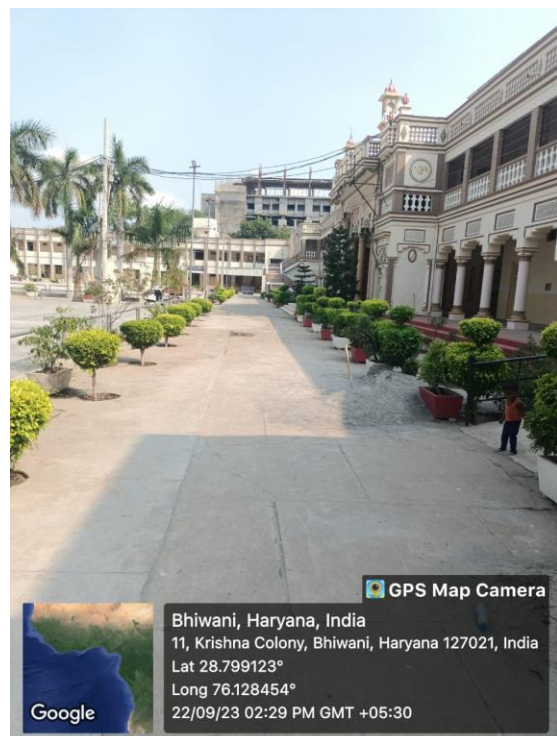
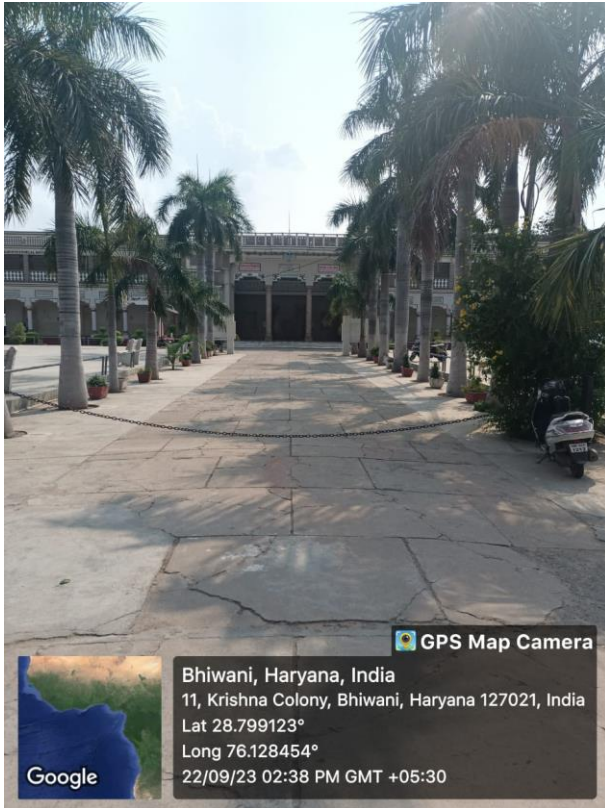


Bhiwani, Haryana, India  
11, Krishna Colony, Bhiwani, Haryana 127021, India  
Lat 28.799123°  
Long 76.128454°  
22/09/23 03:13 PM GMT +05:30

Principal  
Principal,  
VAISH COLLEGE  
BHIWANI

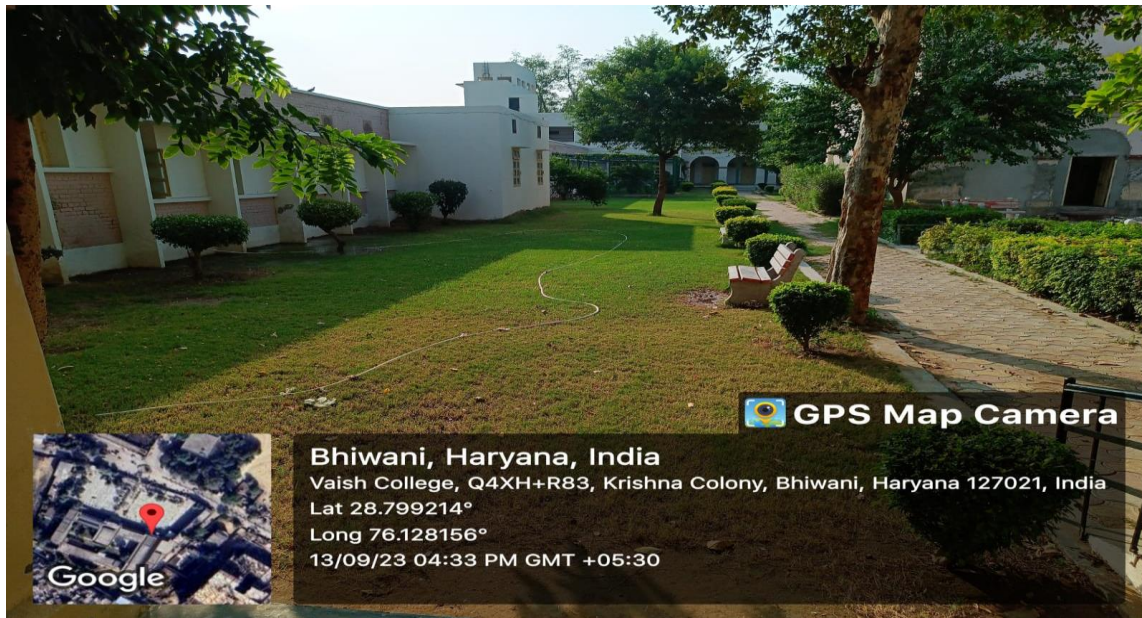
# VAISH COLLEGE, BHIWANI

## COLLEGE ENTRANCE CAMPUS



Principal  
Principal,  
VAISH COLLEGE  
BHIWANI

# VAISH COLLEGE, BHIWANI



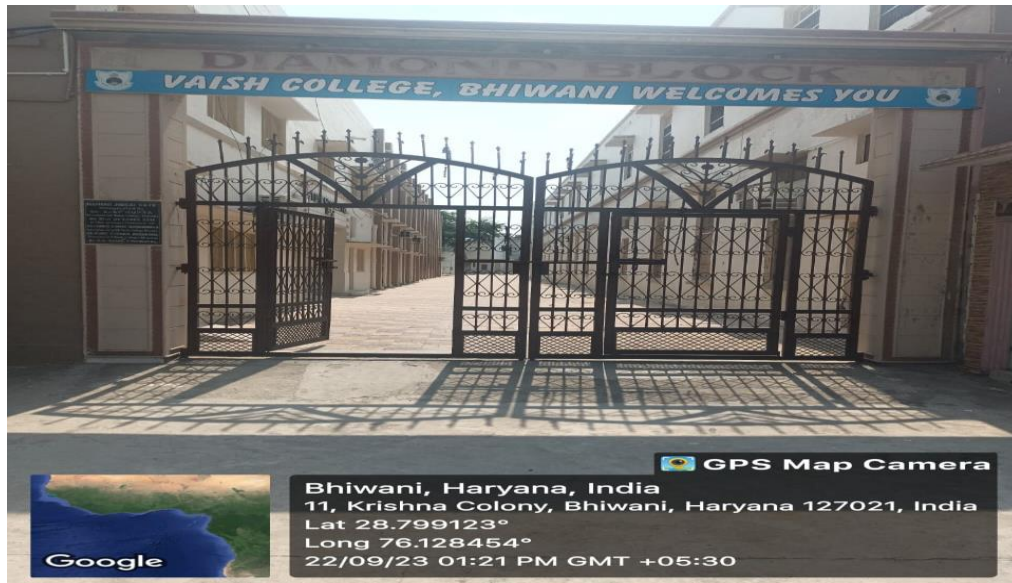
CLEAN AND GREEN COLLEGE CAMPUS



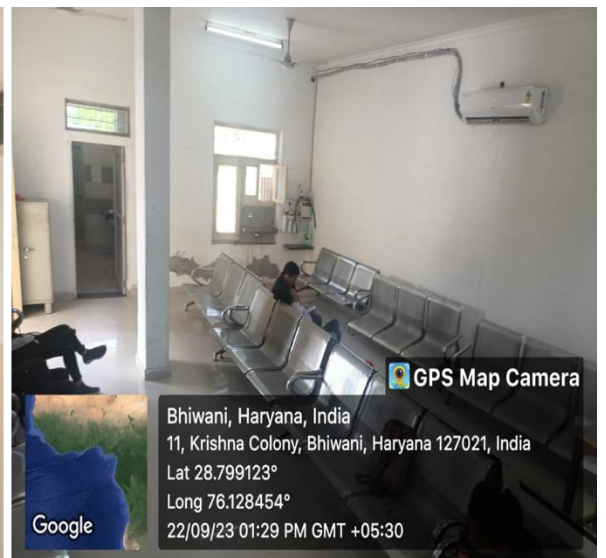
COLLEGE ADMINISTRATION BLOCK

Principal  
Principal,  
VAISH COLLEGE  
BHIWANI

# VAISH COLLEGE, BHIWANI



DIAMOND BLOCK



GIRL'S COMMON ROOM OUTSIDE AND INSIDE VIEW



# VAISH COLLEGE, BHIWANI



STAFF ROOM

# VAISH COLLEGE, BHIWANI



SUPERINTENDENT'S ROOM OUTSIDE AND INSIDE VIEW

Principal  
Principal,  
VAISH COLLEGE  
BHIWANI

# VAISH COLLEGE, BHIWANI



ADMIN BLOCK –I



ADMIN BLOCK-II

Principal  
Principal,  
VAISH COLLEGE  
BHIWANI

# VAISH COLLEGE, BHIWANI



## SMART CLASSROOM -1,2 & 3

Principal  
Principal,  
VAISH COLLEGE  
BHIWANI

# VAISH COLLEGE, BHIWANI



## COMPUTER LAB-I,II & III

Principal  
Principal,  
VAISH COLLEGE  
BHIWANI

# VAISH COLLEGE, BHIWANI

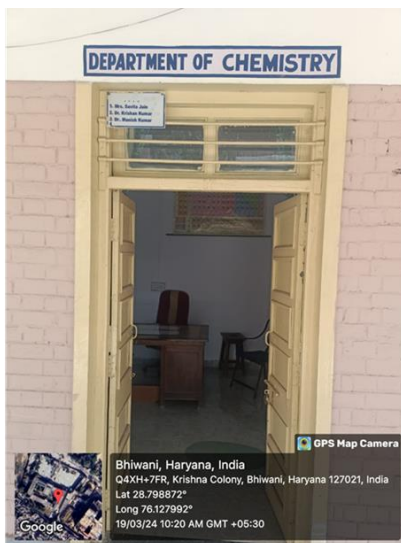


COMPUTER LAB-IV(BBA DEPARTMENT)



COMPUTER LAB-V(BCA DEPARTMENT)

# VAISH COLLEGE, BHIWANI



## CHEMISTRY LAB-I &II

Principal  
Principal,  
VAISH COLLEGE  
BHIWANI

# VAISH COLLEGE, BHIWANI

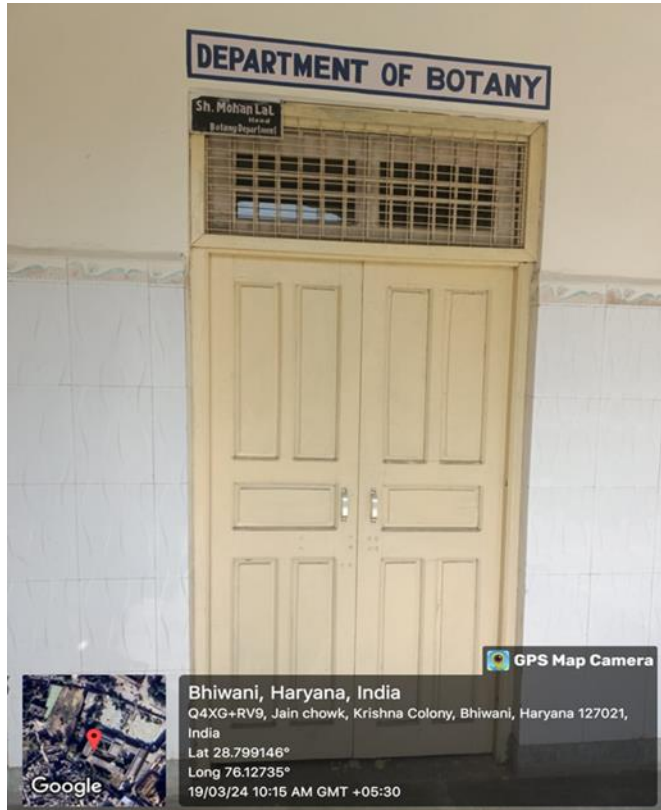


## PHYSICS LAB-I,II & COMPUTER LAB

Principal  
Principal,  
VAISH COLLEGE  
BHIWANI



# VAISH COLLEGE, BHIWANI



## BOTENY LAB

Principal,  
VAISH COLLEGE  
BHIWANI

# VAISH COLLEGE, BHIWANI

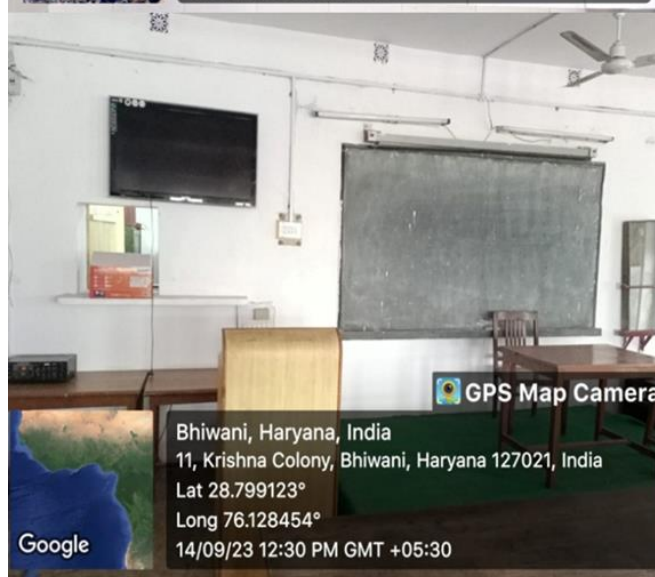
Zoology Department



## ZOOLOGY LAB

Principal  
Principal,  
VAISH COLLEGE  
BHIWANI

# VAISH COLLEGE, BHIWANI



## Psychology Department & LAB

Principal  
Principal,  
VAISH COLLEGE  
BHIWANI

# VAISH COLLEGE, BHIWANI



CCTV-CAMERA



IQAC-NAAC ROOM

Principal  
Principal,  
VAISH COLLEGE  
BHIWANI

# ***VAISH COLLEGE, BHIWANI***

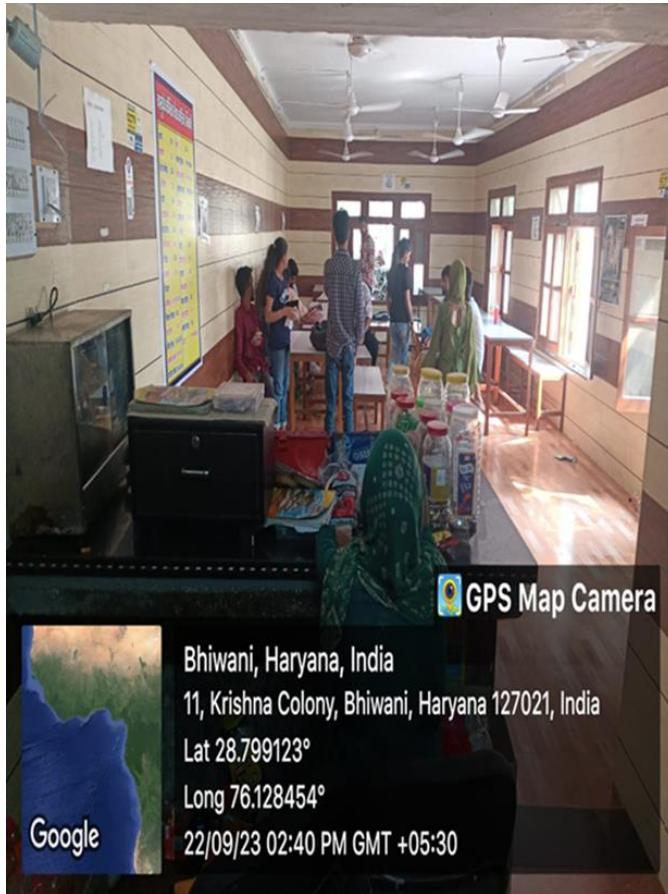


# ***VAISH COLLEGE, BHIWANI***

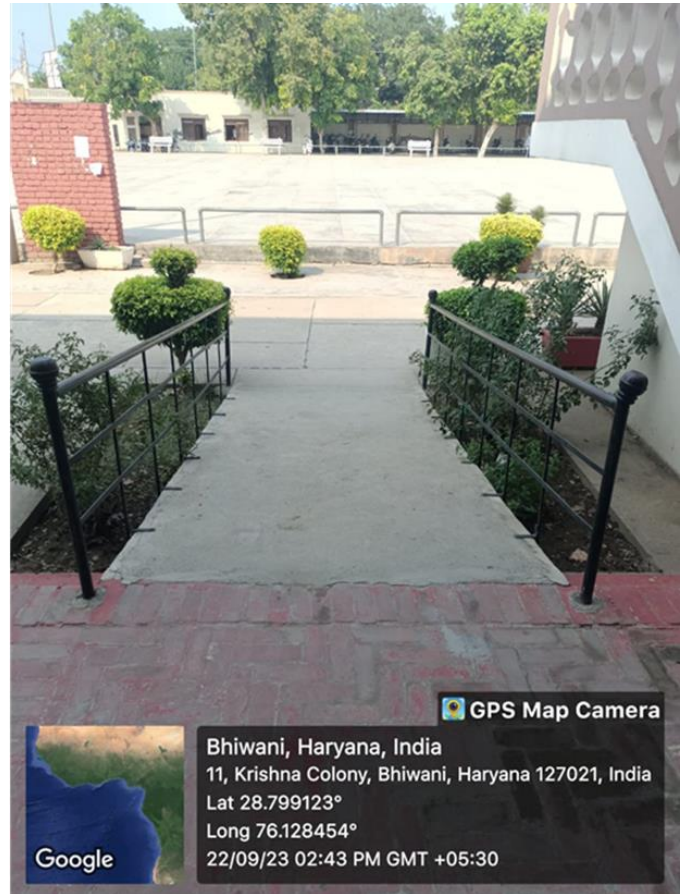


  
Principal,  
VAISH COLLEGE  
BHIWANI

# VAISH COLLEGE, BHIWANI



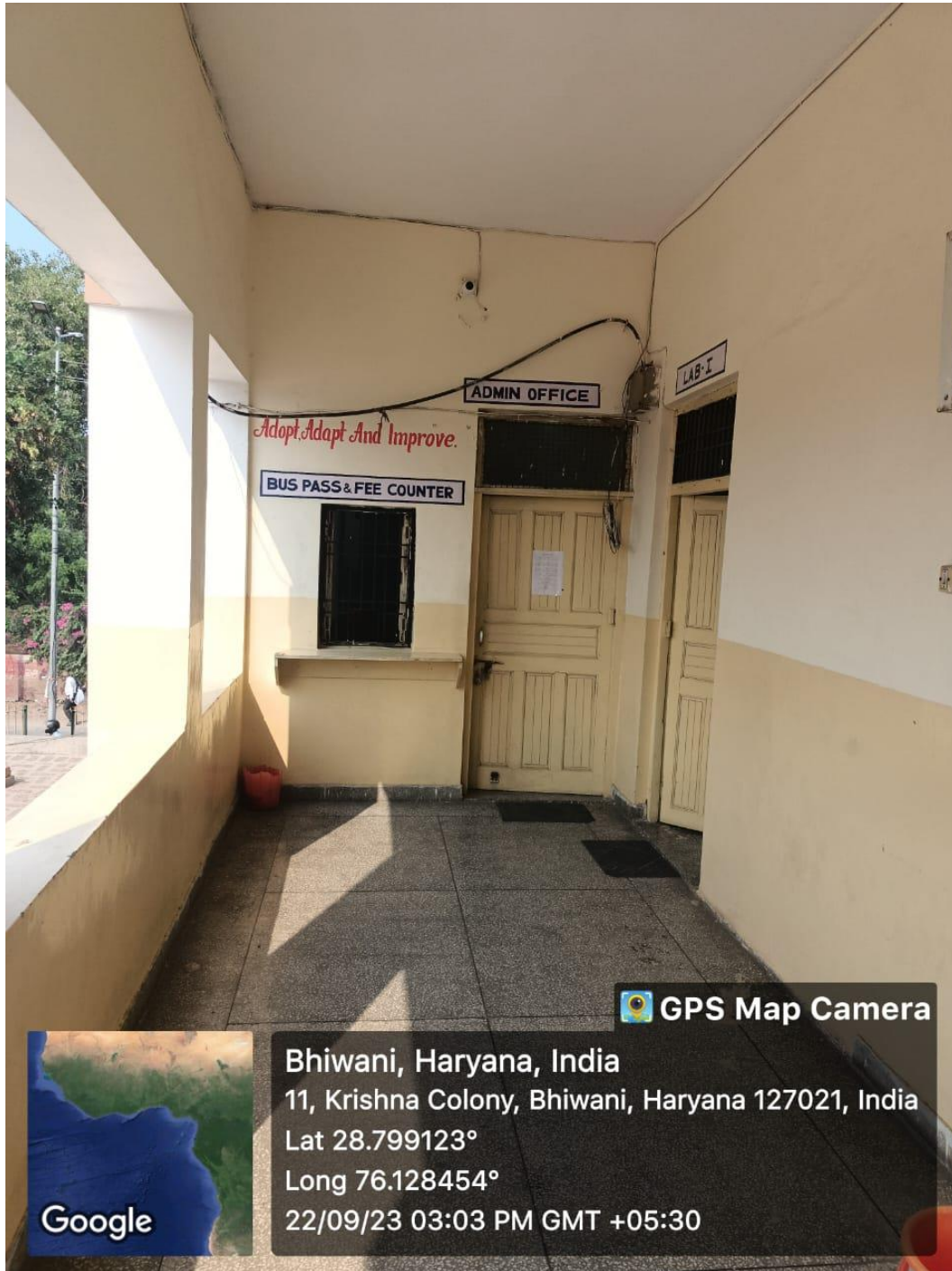
COLLEGE-CANTEEN



RAMP FOR DISABLED PERSONS

Principal  
Principal,  
VAISH COLLEGE  
BHIWANI

# VAISH COLLEGE, BHIWANI



ADMIN BLOCK(SELF-FINANCE DEPARTMENT)



# VAISH COLLEGE, BHIWANI



PARKING PLACE-I



PARKING PLACE-II

# ***VAISH COLLEGE, BHIWANI***



**PARKING PLACE-III**



**WATER AND ELECTRIC STORE**

# ***VAISH COLLEGE, BHIWANI***



**PHOTOCOPY MACHINE**



**Solar panel 45KW**

# VAISH COLLEGE, BHIWANI



GENERATOR-I



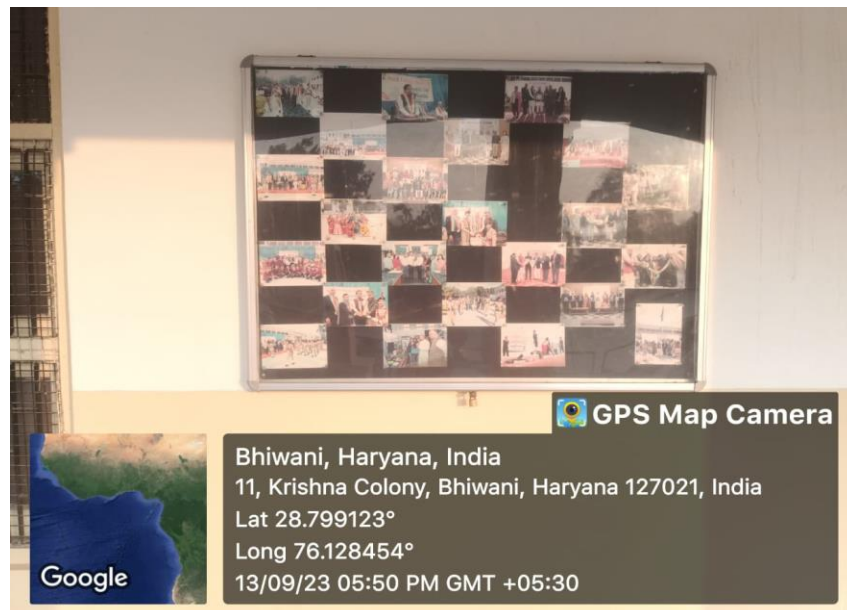
GENERATOR-II

Principal  
Principal,  
VAISH COLLEGE  
BHIWANI

# VAISH COLLEGE, BHIWANI



Suggestion Box



Notice Board

Principal  
Principal,  
VAISHCOLLEGE  
BHIWANI

# VAISH COLLEGE, BHIWANI



Bhiwani, Haryana, India



Fire Safty

# VAISH COLLEGE, BHIWANI

The Institution has adequate facilities for cultural activities, sports (indoor, outdoor), gymnasium, yoga centre etc.

## FACILITIES OF CULTURAL ACTIVITIES:

List of Cultural Events:

1	Classical Music	L.M.Vocal :Ghazal/Geet/Bhajan
		Classical Music (Inst Indian.)P
		Indian Classical Music (Inst.)NP
		Indian Classical Music Vocal
2	Light Music	Group Song(Indian)
		Group Song(Western)
		Western Vocal(Solo)
		Qawwali
		Orchestra(Haryanvi)
3	Theatre	Mimicry
		One Act Play
		One Act Play(Sanskrit)
		Mimi
		Western Inst.Solo
4	Dance	Classical Dance Solo
		Skit
		Folk Dance(Group)
5	Literary	Poetic Recitation(Hindi)
		Poetic Recitation(English)
		Poetic Recitation(Urdu)
		Debate(Hindi/English)
		Poetic Recitation(Punjabi)
		Declamation in Sanskrit
		Sanskrit Shaloka Ucharan
		Quiz
		Installation
		Elocution
6	Fine Arts	On The Spot Painting
		Collage
		Mehandi
		Clay Modelling
		Poster Making
		Cartooning
		Rangoli
		Photography

# VAISH COLLEGE, BHIWANI



SEMINAR HALL



CULTURAL ROOM



# VAISH COLLEGE, BHIWANI



**OPEN STAGE**

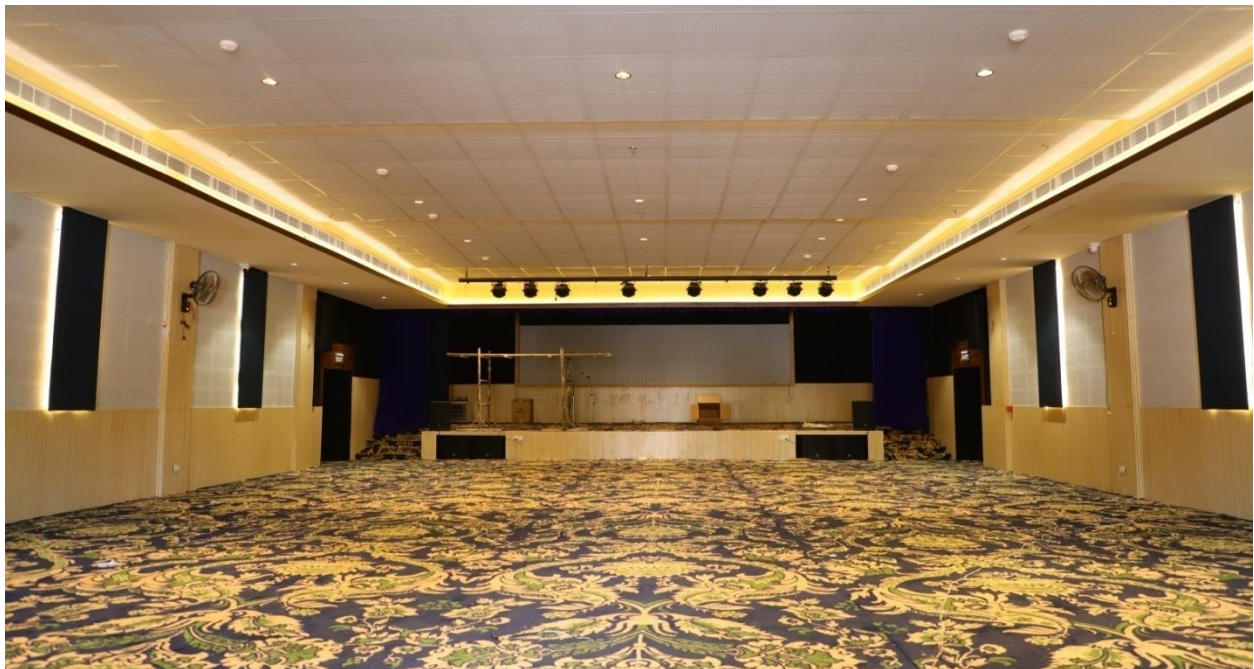


**THEATRE ROOM**

# VAISH COLLEGE, BHIWANI



**AUDITORIUM OUTSIDE VIEW**



**AUDITORIUM INSIDE VIEW**

# VAISH COLLEGE, BHIWANI

CULTURAL ACTIVITIES PERFORMING IN THE COLLEGE



Principal  
Principal,  
VAISH COLLEGE  
BHIWANI

# VAISH COLLEGE, BHIWANI



**CULTURAL ACTIVITIES PERFORMING IN THE COLLEGE**

# VAISH COLLEGE, BHIWANI



**Art and Craft Activities**

# VAISH COLLEGE, BHIWANI



**Art and Craft Activities**

# VAISH COLLEGE, BHIWANI



**Art and Craft Activities and Quiz competition**

# VAISH COLLEGE, BHIWANI



## Art and Dance competition



# VAISH COLLEGE, BHIWANI

## List of Sports Events:

<b>1.</b>	<b>In Campus</b>	<b>Weight Lifting, Power Lifting, Body Building</b>
		<b>Badminton</b>
		<b>Table Tennis</b>
		<b>Karate</b>
		<b>Volly Ball</b>
		<b>Kabaddi</b>
		<b>Chess</b>
		<b>Wushu</b>
		<b>Wrestling(M)</b>
		<b>Wrestling(W)</b>
		<b>Boxing</b>
		<b>Basket Ball</b>
		<b>Gymnastics</b>
		<b>Lawn Tennis</b>
<b>2</b>	<b>In Stadium</b>	<b>Best Physique</b>
		<b>Cricket</b>
		<b>Athletics</b>
		<b>Judo</b>
		<b>Cross Country</b>
		<b>Archery</b>
		<b>Shooting(M)</b>
		<b>Shooting(W)</b>
		<b>Relay Race</b>

  
Principal,  
VAISH COLLEGE  
BHIWANI

# VAISH COLLEGE, BHIWANI



## Sports Activities

Principal  
Principal,  
VAISH COLLEGE  
BHIWANI

# VAISH COLLEGE, BHIWANI



## Sports Activities

# VAISH COLLEGE, BHIWANI



**Sports Activities and Mini Gym Equipments**

Principal  
Principal,  
VAISH COLLEGE  
BHIWANI

# VAISH COLLEGE, BHIWANI



**Mini Gym Equipments**

Principal  
Principal,  
VAISH COLLEGE  
BHIWANI

# VAISH COLLEGE, BHIWANI

NCC



**NCC PARADE ON THE EVENT OF INDEPENDENCE DAY OPPOSITE PRINCIPAL OFFICE**



Principal  
Principal,  
VAISH COLLEGE  
BHIWANI

# VAISH COLLEGE, BHIWANI

NSS



# VAISH COLLEGE, BHIWANI

## RED RIBBON CLUB

### एड्स एवं कोविड-19 विषय पर प्रश्नोत्तरी प्रतियोगिता आयोजित



प्रतियोगिता में विजेता प्रतिभागी।

आज समाज

#### अंशु शर्मा

भिवानी। एचआईवी, एड्स एवं कोविड-19 एक घातक विषाणु बीमारी है, इससे हमें सतर्क रहने की आवश्यकता है। यह बात स्थानीय वैश्य महाविद्यालय के रेड रिबन क्लब के तत्वावधान में महाविद्यालय प्रांगण में एचआईवी, एड्स एवं कोविड-19 के विषय पर आयोजित प्रश्नोत्तरी प्रतियोगिता के अवसर पर महाविद्यालय

के प्राचार्य डॉ. संजय गोयल ने कही। उन्होंने कहा कि विभिन्न बीमारियों एवं इसके प्रसार को रोकने के लिए सरकार द्वारा निर्धारित सावधानियों बरतते हुए दूसरो को भी इसके लिए प्रोत्साहित करना होगा। प्रश्नोत्तरी प्रतियोगिता में महाविद्यालय की बीएससी फाइनल की छात्रा शबनम ने प्रथम, बीए फाइनल वर्ष के छात्र कुणाल तथा बीएससी फाइनल की छात्रा स्नेहा ने तृतीय स्थान प्राप्त किया।





# VAISH COLLEGE, BHIWANI

## RED CROSS SOCIETY



Principal  
Principal,  
VAISH COLLEGE  
BHIWANI

# VAISH COLLEGE, BHIWANI

## Women Cell

